



Dynamic Air Scoop Installation Instructions: BMW '06-'08 E90/92/93 3-Series D.A.S.

Kit P/N:	54-11478 55-11470/1 55-11660/1	Tools Required:	Flat head screwdriver Driver w/T25 torx bit	Parts List:	1 05-01016 Driver side D.A.S. 1 05-01017 Passenger side D.A.S.
Make:	BMW				
Model:	Year:	Engine:			
E90(3-Series)	06-08	ALL			
E92(3-Series)	07-08	ALL			
E93(3-Series)	07-08	ALL			
<i>Note: Installation is for D.A.S. Only!</i>					



Complete Kit w/ Parts



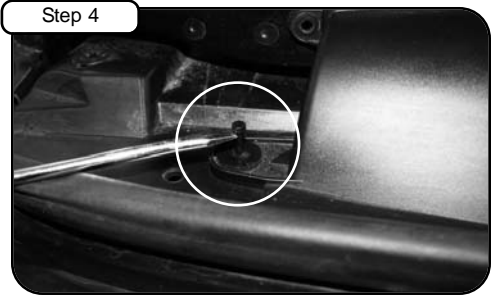
Complete Stock Configuration. (BMW 335i model shown above. Also fits M3 model)



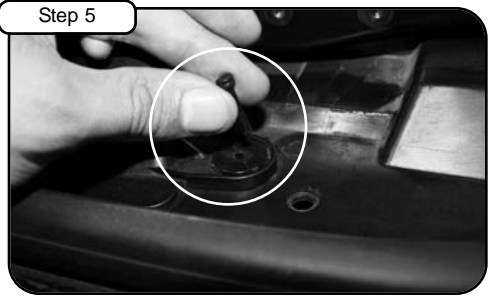
Remove screws on ram air duct using T25 torx bit. (Save for later installation)



Pull back ram air duct and remove.



With flat head screwdriver, carefully pry and push up plastic pin.



Remove plastic pin.



Remove plastic clip. Repeat steps 4-6 for remaining clip. (Save for later installation)



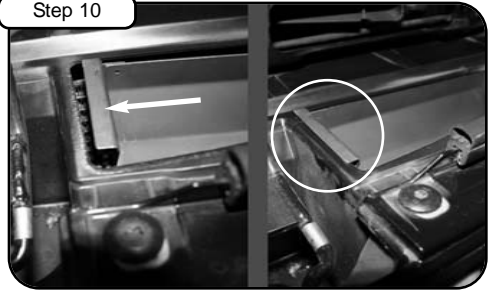
Lift and pull out cover.



The grills are held in place with push clips. To remove, reach in behind each grill and push forward.



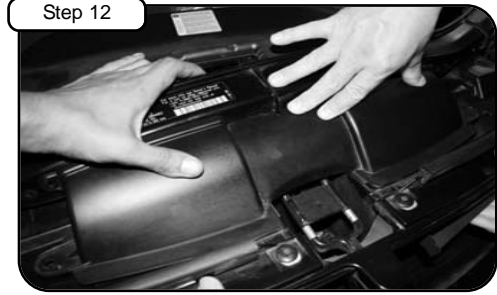
Install 05-01016 Driver side D.A.S.



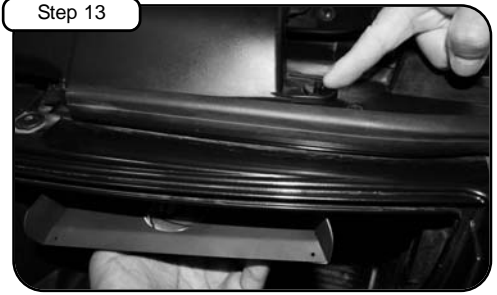
Position scoop tab on plastic support as shown. (Repeat for 05-01017 Passenger side D.A.S.)



For easier installation, the next three steps will require an assistant. Have person **A** hold the scoops in position as shown.



Have person **B** re-install the cover and secure with plastic pin clips that were removed earlier. (See steps 4-6)



Detail of properly installed plastic pin clips. Make sure pin clips are through hole on scoops allowing to secure and hold in place!



Re-position ram air duct from step 3. Secure using the 2 screws from step 2 and tighten using T25 torx bit.



Your completed D.A.S. installation will look like this. Check and make sure they are secure. Re-install grills by lining up tabs and pushing them in until they snap into place. Thank you for choosing aFe!