

50

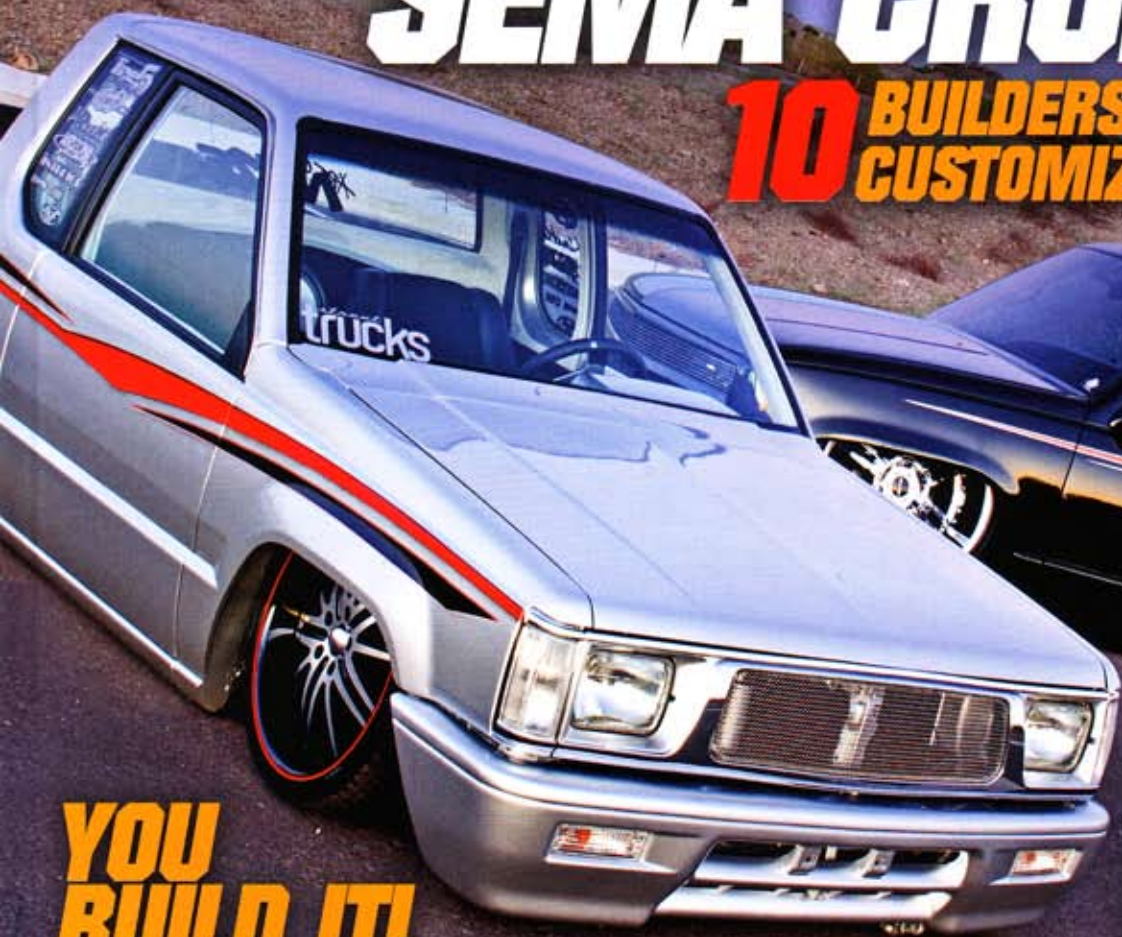
HOT NEW PRODUCTS FOR 2011



street trucks

SEMA CRUNCH

**10 BUILDERS RACE THE
CUSTOMIZING CLOCK**



**YOU
BUILD IT!**

- OLD SKOOL DASH SWAP
- IMPROVED 4X4 HANDLING
- COMFORTABLE CUSTOM LEATHER
- CANDY COAT YOUR CHASSIS
- SELECT YOUR SOUND SYSTEM
- CLASSIC TRUCK BODY MODS

**CLASSIC
FABRICATION**



streettrucks.com

MARCH 2011 • VOLUME 13, NO. 3
\$5.99 US • DISPLAY UNTIL: 3/8/11



03

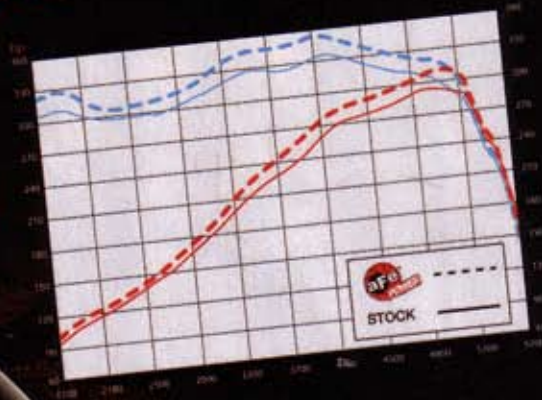
The aFe logo is a red circle with a black 'a' and 'Fe' inside, with a registered trademark symbol.

POWER

ENGINEERED ADRENALINE

FOR YOUR 2010 FORD F150 SVT RAPTOR

+18 HP
+22 TQ



A 1-piece Heat Shield:

The powder coated heat shield attaches to the lower factory air box to keep intake air temps down for increased performance & velocity.

B Tuned Intake Tube:

Black powder coated intake tube with built-in MAF sensor pad has been dyno tuned for maximum air velocity.

C 360° Air Filter:

Huge inverted cone air filter for maximum air flow and filtration. This kit includes both Pro GUARD 7 [oiled] and Pro DRY S [dry] filters.

Call your power professional at **888.901.7693** or visit **aFepower.com** for more info



WRAPTIVO DESIGNER VEHICLE WRAPS

Meguiar's Wraptivo Universal and Wraptivo Individual lines of designer car wraps provide enthusiasts with a unique way to personalize their vehicles using variously sized, textured and colored wraps. Wraptivo Universal is a series of multi-sized kits that can be used to accentuate interior components, exterior trim or other select areas on vehicles. This line features the Textured Collection, which includes different shades of carbon fiber (black, gray and white), brushed metal (aluminum and titanium) and wood (ebony wood gray and ebony wood brown).

Also available is the Flame Collection, which was designed by Automotive Artist Jon Sibal. These partial wrap kits include three different flame patterns offered in a variety of colors. Wraptivo Universal can be applied by do-it-yourselfers or by professionally trained installers. Alternatively, Wraptivo Individual is a more complex, innovative way to customize the appearance of a ride, while also protecting a car's paint surface. This line will be sold exclusively through certified installers for the purpose of full-car wraps.

MEGUIAR'S
800.347.5700
WWW.MEGUIARS.COM

MEGUIAR'S ULTIMATE WASH & WAX

While traditional wash and wax products can be weak on suds, shine and protection, Meguiar's all-new Ultimate Wash & Wax proves different. In fact, this unique formula, made from an exclusive blend of carnauba and synthetic polymers, delivers both protection and a glossy just-waxed shine while you wash. Plus, the ultimate sudsing action safely lifts dirt and grime, enhancing the appearance of any automotive exterior, all in just one easy step. Meguiar's Ultimate Wash & Wax is the perfect way to clean and shine your car's finish in-between regular waxing, thereby boosting protection and glossiness.

MEGUIAR'S
800.347.5700
WWW.MEGUIARS.COM

VORTECH ENGINEERING BUDGET SUPERCHARGER FOR CARBURETED ENGINES

Vortech's new entry level Chevy small-block blow-through system will produce horsepower gains that range from 30 percent to more than 75 percent, depending on boost level and the volumetric efficiency of the engine. The V-3 Si-trim centrifugal supercharger features an internal oil reservoir and can support up to 775 hp. The new PowerHat carburetor bonnet uses Vortech Diffusion Technology for maximum power output. The integrated air management diffuser element reduces jetting and tuning issues associated with traditional carb hats. The design also permits near-360-degree rotation for universal fitment and the 3.2-inch low-profile height allows for hood clearance. The system includes compressor mounting brackets, drive assembly and discharge tube, plus a reusable air filter and all mounting hardware.

VORTECH ENGINEERING
805.247.0226
WWW.VORTECHSUPERCHARGERS.COM



AFE 2011 FORD F150 5.0L MACH FORCE-XP EXHAUST

Advanced Flow Engineering (AFE) announces the release of its new Mach Force-XP cat-back exhaust for the '11 Ford F-150 with the V-8 5.0L motors (P/N 49-43033-cat-back). Part number 49-43033 fits all 125.9- and 144.5-inch wheelbases.

Mach Force-XP exhaust systems are constructed out of huge, mandrel-bent 3-inch 409 stainless steel and utilizes bayonet-style hangers for a complete installation that won't shift under high heat conditions. A monster 4.5-inch 304 polished stainless steel tip finishes this awesome exhaust system. All hardware, including band style clamps, bayonet style hangers and flanges, is supplied for an easy installation.

In recent testing P/N 49-43033 produced 8 hp and 7 lbs-ft torque, outflowed the factory exhaust by 53 percent, and increased mpg.

AFE
WWW.AFEPOWER.COM



SHURHOLD BUFF MAGIC PREMIUM ALL-IN-ONE SURFACE RECONDITIONER AND METAL POLISHER

Shurhold Industries has introduced its Buff Magic metal polish and surface reconditioning product to the automotive aftermarket. As an all-in-one product, Buff Magic can be used as a surface restorer for clearcoat and fiberglass and for removing scratches, mineral deposits and oxidation. In addition, it is useful for headlight restoration. Buff Magic is also a metal cleaner and polisher that's useful for wheels, exhaust tips and bumpers, or for anything made from steel, aluminum, brass, bronze, copper, gold and other precious metals.

SHURHOLD INDUSTRIES
800.962.6241
WWW.SHURHOLD.COM/AUTO



SUPER SPARE INSTANT REUSABLE TIRE REPAIR AND INFLATING SYSTEM

Super Spare will seal a puncture and allow a tire to be filled by averaging the pressure of all available sources. It's an important factor since many of the leading brands on the market do not provide air to inflate the tire to a safe driving pressure. In addition, Super Spare does not use any toxic fluorocarbons or dangerous explosive propellants found in leading brands. Super Spare is quick and easy, stores safely in your vehicle, requires no pumps or jacks, and provides air to inflate tire to safe driving pressure.

PAASCH PRODUCTS
208.337.4423
WWW.SUPERSPARE.COM

