



## INSTALLATION INSTRUCTIONS

**MAKE:** MINI

**MODEL:** Cooper S (R56/R57)

**YEAR:** 2006 - 2014

**ENGINE:** L4-1.6L (Turbo) N14 & N18

**ALSO FITS:** 2007-2010 MINI Clubman S (R55); 2011-2015 MINI Coupe S (R58);  
2011-2015 MINI Roadster S (R59)

**Direct Fit**  
**Cat. Replacement**  
47-46302



### Parts Included:

- P/N: 05-144335 S/A Tube, Cat. Replacement (x1)
- P/N: 05-144336 Tube, Adaptor (x1)

### Hardware Included:

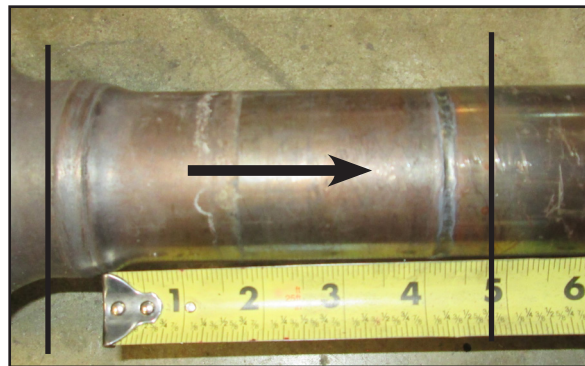
- P/N: 05-41210 Clamp, Band: 2-1/4" (x2)
- P/N: 06-00140 Warranty Card (x1)

**EMISSIONS DISCLAIMER**  
This product is EPA compliant, not for sale or use on vehicles certified for the state of California. Consult your state or local authority for any additional clarification. Replacement of catalytic converters (if equipped) is allowed only under the following conditions: 1) It is missing or stolen; 2) It is damaged or lead poisoned as determined by a state or local inspection facility; or 3) It is outside of the manufacturer's warranty period (consult your owner's manual, if none stated, 5 years or 50,000 miles).

**Caution:** aFe recommends professional installation on our products. Allow time for your vehicle to cool down prior to installation. When working on or under your vehicle proceed with caution. Exhaust systems reach high temperatures and may cause serious burns. Wear protective safety equipment; eye goggles and gloves to ensure a safe installation.

- Step 1:** (Read instructions prior to installation.) Secure vehicle on jack stands. (Refer to your manual for specified jack stand positions.)
- Step 2:** Remove the center cross brace secured under the exhaust system.
- Step 3:** Loosen the OE V- band clamp in front of the flex pipe securing the exhaust to the OE exhaust catalytic converter.
- Step 4:** Remove the OE exhaust off the rubber hangers.
- Step 5:** Remove the exhaust system.
- Step 6:** Using a hack saw, cut the OE exhaust after the post catalytic converter 4" inch from the end of the weld and deburr after cutting.

(Refer to photo below)



- Step 7:** Install the aFe direct fit catalytic converter replacement using the OE V- band clamp, but do not tighten. Slide the adapter pipe over aFe direct fit catalytic converter replacement using 2.25" band clamps slide and tighten.
- Step 8:** Re-install the exhaust system onto the adapter pipe using 2.25" band clamp, but do not tighten
- Step 9:** Re-Install the center cross brace.
- Step 10:** Align the OE exhaust system and then tighten all band clamps.
- Step 11:** Re-check all your work.
- Step 12:** Remove vehicle off jack stands.
- Step 13:** Double check all work and ensure everything is tight.
- Step 14:** Your installation is now complete. It is recommended to re-tighten all exhaust components after 50 - 100 miles.

Note: aFe recommends that the tailpipe be at least 1/2"-1" away from any body panels to avoid heat related body damage. Tighten and secure.