

aFe Control Front Tow Hook BMW F2X, F3X, F8X Series

Product Number:

450-502001-B (Black) · 450-502001-L (Blue) · 450-502001-R (Red) · 450-502001-G (Grey)

Install Time:

15 Min.



Recommended Tools:

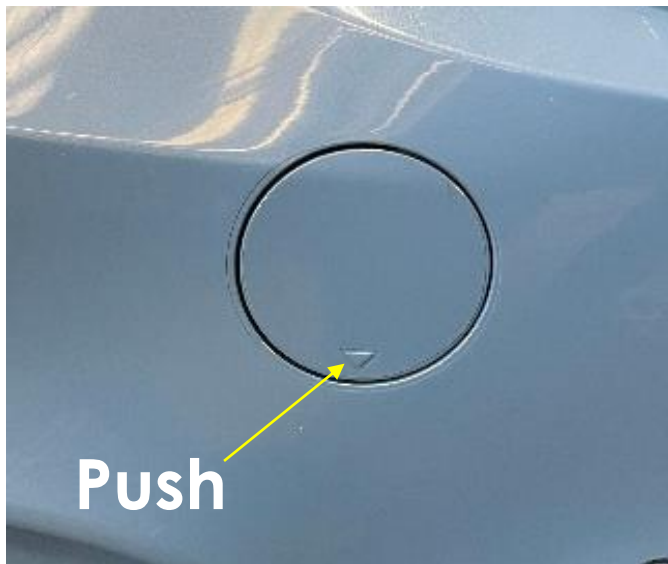
- Sockets: 15mm, 1 inch
- Socket Wrench
- Small Extension

Caution

aFe Control's tow hook is intended for temporary straight line pull force. Applying force at an angle may lead to damage to vehicle or tow hook failure.

Front Installation

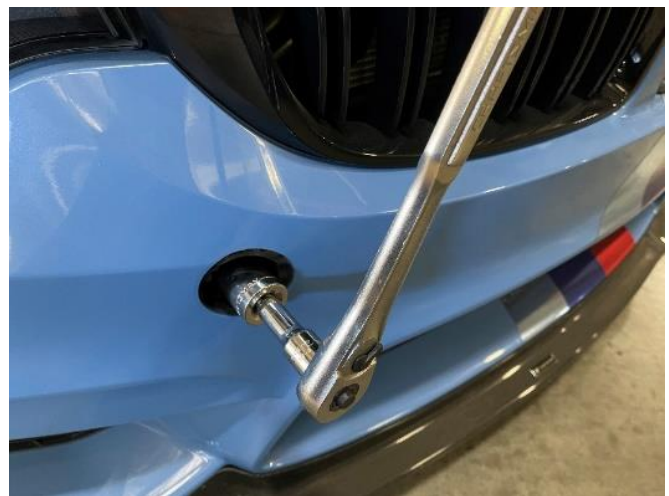
1. Push on arrow to pop out cap.



2. Remove cap once popped out
(Note: gently pull on hanger to fully remove cap)



3. If there is any debris in the vehicle inner threads, blow out with compressed air. Thread in the 4.2" stem with 1-inch socket and fully tighten. (Note: Stem threads are pre-coated with Vibratite Thread Locker)



4. Attach the hook to the stem using the included M12 bolt with a 15mm socket and firmly tighten it.



5. You are finished with the front tow hook.





*232 Granite St.
Corona, CA 92879
aFepower.com*